

(DANRE) spop Antibody (N-term)
Purified Rabbit Polyclonal Antibody (Pab)
Catalog # Azb18701a

Specification

(DANRE) spop Antibody (N-term) - Product Information

Application	WB,E
Primary Accession	Q7T330
Other Accession	Q6ZWS8 , Q43791 , Q0VCW1 , Q0IHH9 , Q7ZX06 , Q9VFP2
Reactivity	Mouse, Zebrafish
Predicted	Drosophila, Xenopus, Bovine, Human
Host	Rabbit
Clonality	Polyclonal
Isotype	Rabbit IgG
Calculated MW	42134

(DANRE) spop Antibody (N-term) - Additional Information

Gene ID 100005514

Other Names

Speckle-type POZ protein, HIB homolog 1, SPOP1, spop

Target/Specificity

This (DANRE) spop antibody is generated from a rabbit immunized with a KLH conjugated synthetic peptide between 74-107 amino acids from the N-terminal region of human (DANRE) spop.

Dilution

WB~~1:1000

E~~Use at an assay dependent concentration.

Format

Purified polyclonal antibody supplied in PBS with 0.09% (W/V) sodium azide. This antibody is purified through a protein A column, followed by peptide affinity purification.

Storage

Maintain refrigerated at 2-8°C for up to 2 weeks. For long term storage store at -20°C in small aliquots to prevent freeze-thaw cycles.

Precautions

(DANRE) spop Antibody (N-term) is for research use only and not for use in diagnostic or therapeutic procedures.

(DANRE) spop Antibody (N-term) - Protein Information

Name spop

Function Component of a cullin-RING-based BCR (BTB-CUL3-RBX1) E3 ubiquitin-protein ligase complex that mediates the ubiquitination of target proteins, leading most often to their proteasomal degradation.

Cellular Location

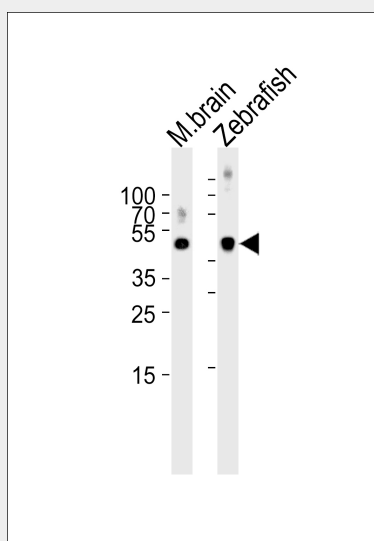
Nucleus. Nucleus speckle

(DANRE) spop Antibody (N-term) - Protocols

Provided below are standard protocols that you may find useful for product applications.

- [Western Blot](#)
- [Blocking Peptides](#)
- [Dot Blot](#)
- [Immunohistochemistry](#)
- [Immunofluorescence](#)
- [Immunoprecipitation](#)
- [Flow Cytometry](#)
- [Cell Culture](#)

(DANRE) spop Antibody (N-term) - Images



Western blot analysis of lysates from mouse brain and Zebrafish tissue lysate (from left to right), using (DANRE) spop Antibody (N-term)(Cat. #Azb18701a). Azb18701a was diluted at 1:1000 at each lane. A goat anti-rabbit IgG H&L(HRP) at 1:5000 dilution was used as the secondary antibody. Lysates at 35ug per lane.

(DANRE) spop Antibody (N-term) - Background

Component of a cullin-RING-based BCR (BTB-CUL3-RBX1) E3 ubiquitin-protein ligase complex that mediates the ubiquitination of target proteins, leading most often to their proteasomal degradation (By similarity).

(DANRE) spop Antibody (N-term) - References

Zhang Q.,et al.Dev. Cell 10:719-729(2006).